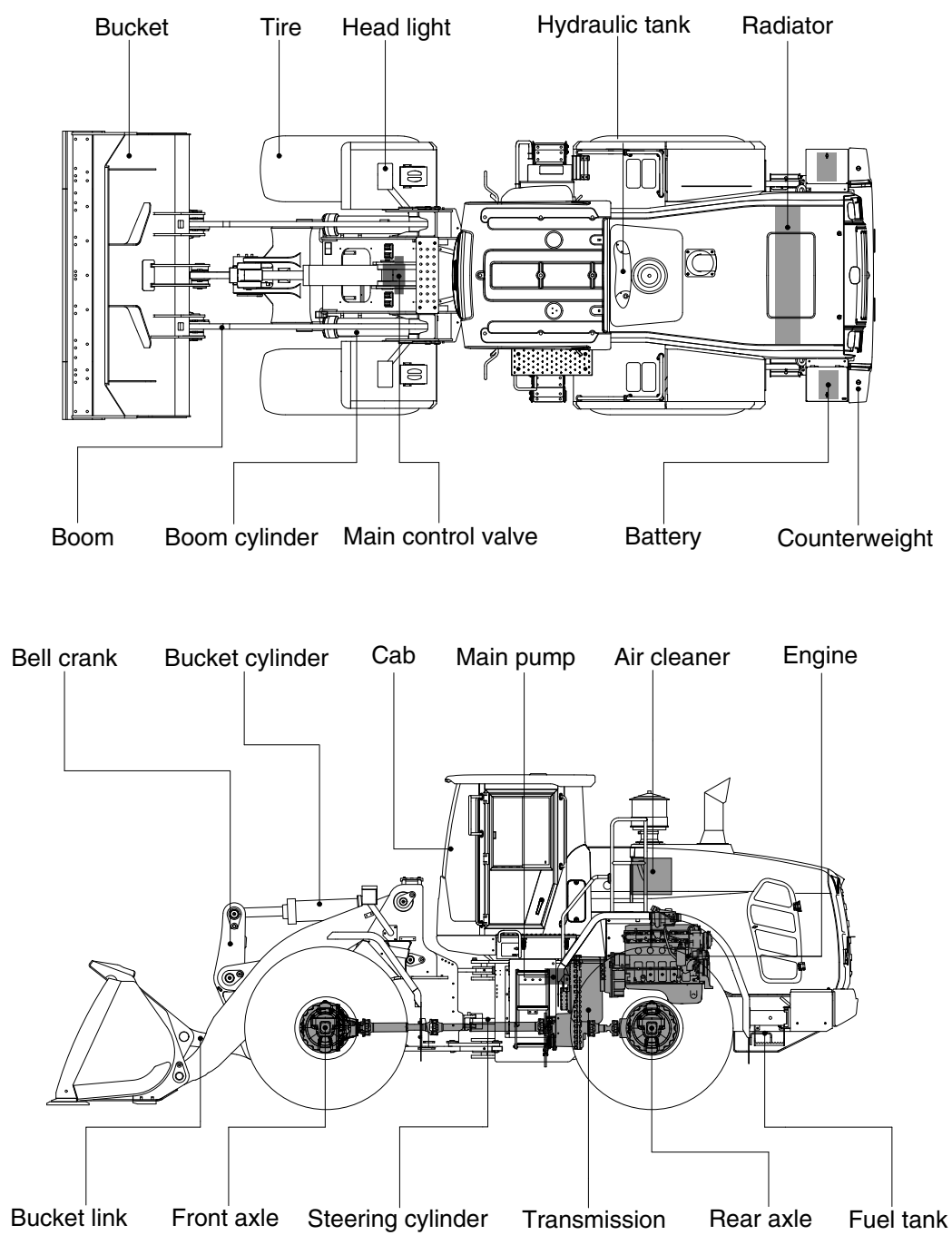


## 2. SPECIFICATIONS

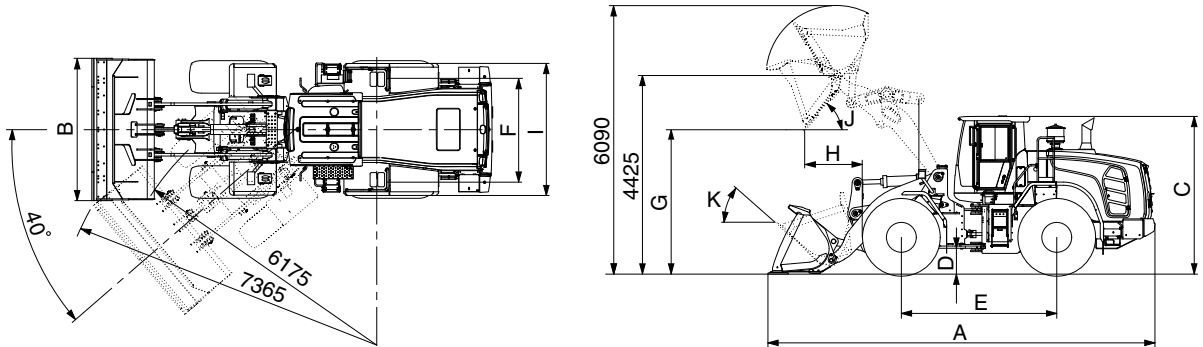
### 1. MAJOR COMPONENTS



975SA2SE01

## 2. SPECIFICATIONS

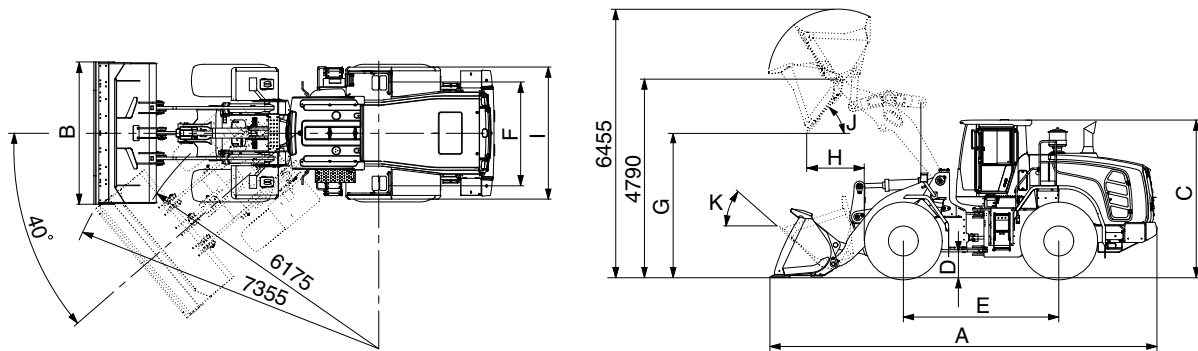
### 1) WITH BOLT-ON CUTTING EDGE TYPE BUCKET (HL975 T3)



975SA2SE03

Description			Unit	Specification
Operating weight			kg (lb)	26450 (58315)
Bucket capacity	Struck		m³ (yd³)	4.1 (5.4)
	Heaped			4.8 (6.3)
Overall length	A		mm (ft-in)	9205 (30' 2")
Overall width	B			3250 (10' 8")
Overall height	C			3590 (11' 9")
Ground clearance	D			460 (1' 6")
Wheelbase	E			3550 (11' 8")
Tread	F			2300 (7' 7")
Dump clearance at 45°	G			3120 (10' 3")
Dump reach (full lift)	H			1335 (4' 5")
Width over tires	I			2975 (9' 9")
Dump angle	J		degree (°)	48
Roll back angle (carry position)	K			48
Cycle time	Lift (with load)		sec	6.2
	Dump (with load)			1.5
	Lower (empty)			4.2
Maximum travel speed			km/hr (mph)	37.1 (23.1)
Braking distance			m (ft-in)	11.6 (38' 1")
Minimum turning radius (center of outside tire)				6.18 (20' 3")
Gradeability			degree (°)	30
Breakout force			kg (lb)	23435 (51670)
Travel speed	Forward	First gear	km/hr (mph)	6.7 (4.2)
		Second gear		11.2 (7.0)
		Third gear		24.9 (15.5)
		Fourth gear		37.1 (23.1)
	Reverse	First gear		6.7 (4.2)
		Second gear		11.2 (7.0)
		Third gear		24.9 (15.5)

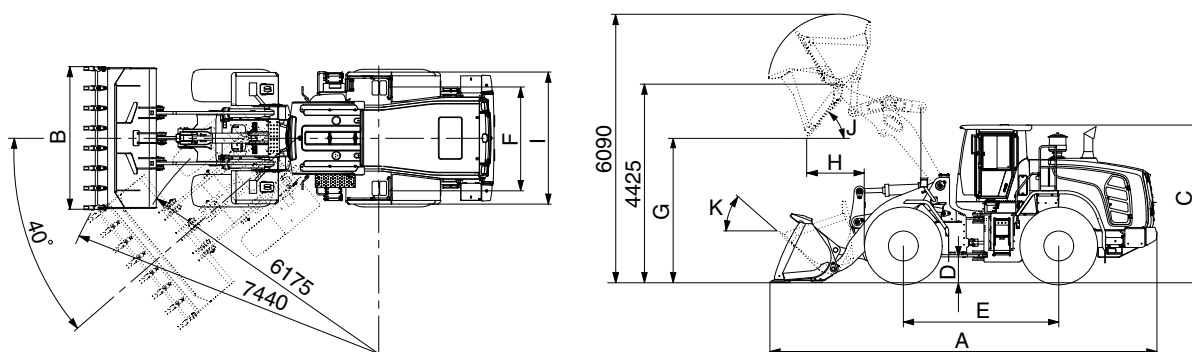
## WITH BOLT-ON CUTTING EDGE TYPE BUCKET (HL975XT T3)



975SA2SE03-1

Description			Unit	Specification
Operating weight			kg (lb)	27245 (60065)
Bucket capacity	Struck		m³ (yd³)	4.1 (5.4)
	Heaped			4.8 (6.3)
Overall length	A		mm (ft-in)	9640 (31' 8")
Overall width	B			3250 (10' 8")
Overall height	C			3590 (11' 9")
Ground clearance	D			460 (1' 6")
Wheelbase	E			3550 (11' 8")
Tread	F			2300 (7' 7")
Dump clearance at 45°	G			3485 (11' 5")
Dump reach (full lift)	H			1420 (4' 8")
Width over tires	I			2975 (9' 9")
Dump angle	J		degree (°)	48
Rollback angle (carry position)	K			49
Cycle time	Lift (with load)		sec	6.2
	Dump (with load)			1.5
	Lower (empty)			4.2
Maximum travel speed			km/hr (mph)	37.1 (23.1)
Braking distance			m (ft-in)	11.6 (38' 1")
Minimum turning radius (center of outside tire)				6.18 (20' 3")
Gradeability			degree (°)	30
Breakout force			kg (lb)	23290 (51355)
Travel speed	Forward	First gear	km/hr (mph)	6.7 (4.2)
		Second gear		11.2 (7.0)
		Third gear		24.9 (15.5)
		Fourth gear		37.1 (23.1)
	Reverse	First gear		6.7 (4.2)
		Second gear		11.2 (7.0)
Third gear		24.9 (15.5)		

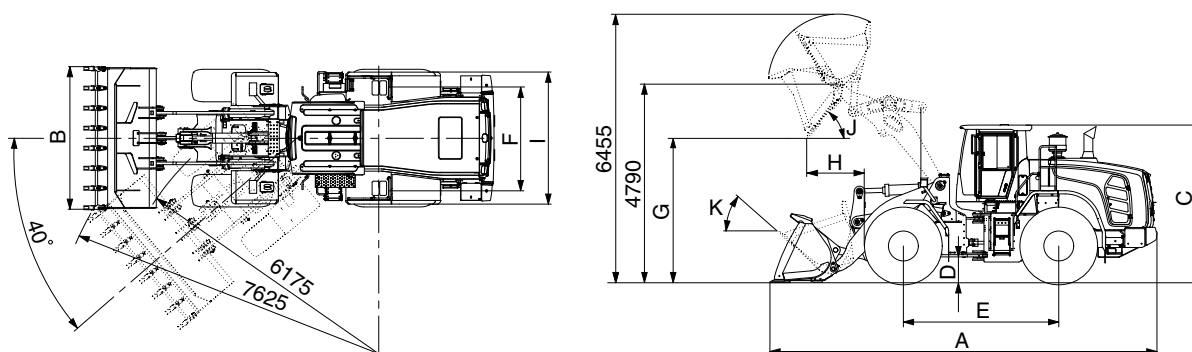
## 2) WITH TOOTH TYPE BUCKET (HL975 T3)



975SA2SE04

Description			Unit	Specification
Operating weight			kg (lb)	26345 (58085)
Bucket capacity	Struck		m³ (yd³)	4.0 (5.2)
	Heaped			4.6 (6.0)
Overall length	A		mm (ft-in)	9355 (30' 8")
Overall width	B			3300 (10' 10")
Overall height	C			3590 (11' 9")
Ground clearance	D			460 (1' 6")
Wheelbase	E			3550 (11' 8")
Tread	F			2300 (7' 7")
Dump clearance at 45°	G			2995 (9' 10")
Dump reach (full lift)	H			1420 (4' 8")
Width over tires	I			2975 (9' 9")
Dump angle	J			degree (°)
Rollback angle (carry position)	K		48	
Cycle time	Lift (with load)		sec	6.2
	Dump (with load)			1.5
	Lower (empty)			4.2
Maximum travel speed			km/hr (mph)	37.1 (23.1)
Braking distance			m (ft-in)	11.6 (38' 1")
Minimum turning radius (center of outside tire)				6.18 (20' 3")
Gradeability			degree (°)	30
Breakout force			kg (lb)	24725 (54510)
Travel speed	Forward	First gear	km/hr (mph)	6.7 (4.2)
		Second gear		11.2 (7.0)
		Third gear		24.9 (15.5)
		Fourth gear		37.1 (23.1)
	Reverse	First gear		6.7 (4.2)
		Second gear		11.2 (7.0)
		Third gear		24.9 (15.5)

## WITH TOOTH TYPE BUCKET (HL975XT T3)



975SA2SE04-1

Description			Unit	Specification
Operating weight			kg (lb)	27140 (59840)
Bucket capacity	Struck		m³ (yd³)	4.1 (5.4)
	Heaped			4.8 (6.3)
Overall length	A		mm (ft-in)	9790 (32' 1")
Overall width	B			3300 (10' 10")
Overall height	C			3590 (11' 9")
Ground clearance	D			460 (1' 6")
Wheelbase	E			3550 (11' 8")
Tread	F			2300 (7' 7")
Dump clearance at 45°	G			3360 (11' 0")
Dump reach (full lift)	H			1505 (4' 11")
Width over tires	I			2975 (9' 9")
Dump angle	J			degree (°)
Rollback angle (carry position)	K		49	
Cycle time	Lift (with load)		sec	6.2
	Dump (with load)			1.5
	Lower (empty)			4.2
Maximum travel speed			km/hr (mph)	37.1 (23.1)
Braking distance			m (ft-in)	11.6 (38' 1")
Minimum turning radius (center of outside tire)				6.18 (20' 3")
Gradeability			degree (°)	30
Breakout force			kg (lb)	24580 (54195)
Travel speed	Forward	First gear	km/hr (mph)	6.7 (4.2)
		Second gear		11.2 (7.0)
		Third gear		24.9 (15.5)
		Fourth gear		37.1 (23.1)
	Reverse	First gear		6.7 (4.2)
		Second gear		11.2 (7.0)
		Third gear		24.9 (15.5)

### 3. WEIGHT

Item		kg	lb
Front frame assembly		2222	4900
Rear frame assembly		2600	5735
Front fender (LH/RH)		43/43	95/95
Rear fender (LH/RH)		64/64	145/145
Counterweight (HL975 T3)		1960	4325
Counterweight (HL975XT T3)		2413	5320
Cab assembly		947	2090
Engine assembly		860	1900
Transmission assembly (4-speed)		724	1600
Driveshaft (front)		40	90
Driveshaft (center)		37	85
Driveshaft (rear)		21	50
Front axle (include differential)		1770	3905
Rear axle (include differential)		1280	2825
Tire (26.5 R25, ★★, L3) / 1EA		700	1543
Hydraulic tank assembly		200	445
Fuel tank assembly		409	905
Main pump assembly		135	300
Fan & brake pump assembly		13	30
Main control valve (2 spool/3 spool)		63/81	140/180
Steering valve (priority valve)		28	65
Boom assembly	HL975 T3	1736	3830
	HL975XT T3	1975	4355
Bell crank assembly / Bucket link		494 / 80	1090 / 180
Quick coupler assy (ISO type)		686	1515
Bolt on cutting edge type, 4.8 m³ bucket		2384	5260
Bolt on cutting edge type, 5.2 m³ bucket		2475	5460
Bolt on cutting edge type, 4.8 m³ bucket (quick coupler)		2306	5085
1-Bolt on tooth type, 4.6 m³ bucket		2273	5015
1-Bolt on tooth type, 5.0 m³ bucket		2371	5230
2-Bolt on tooth type, 4.6 m³ bucket		2290	5050
2-Bolt on tooth type, 5.0 m³ bucket		2389	5270
2-Bolt on tooth & segment edge type, 5.2 m³ bucket		2666	5880

Item		kg	lb
Boom cylinder assembly (LH/RH)		220/220	490/490
Bucket cylinder assembly	HL975 T3	256	565
	HL975XT T3	276	610
Steering cylinder assembly (LH/RH)		45/45	100/100
Seat (including suspension and armrest)		78	175
Battery (1EA)		64	145
Under guard kit		83	185
Engine hood assy		356	785
Mud guard assy (LH/RH)		33/33	75/75

## 4. SPECIFICATION FOR MAJOR COMPONENTS

### 1) ENGINE

Item	Specification
Model	CUMMINS X12
Type	4-cycle turbocharged, charge air cooled diesel engine
Control type	Electronic control
Cooling method	Water cooled
Number of cylinders and arrangement	6 cylinders, in-line
Firing order	1-5-3-6-2-4
Combustion chamber type	Direct injection type
Cylinder bore × stroke	132 × 144 mm (5.2" × 5.7")
Piston displacement	8900 cc (543 cu in)
Compression ratio	17 : 1
Gross power	335 hp (250 kW) at 2100 rpm
Net power	330 hp (246 kW) at 2100 rpm
Maximum power	370 hp (276 kW) at 1800 rpm
Peak gross torque	171 kgf · m (1235 lbf · ft) at 1400 rpm
Engine oil quantity	34 ℓ (9.0 U.S. gal)
Wet weight	860 kg (1896 lb)
Starting motor	28 V - 7.5 kW
Alternator	28 V - 110 Amp
Battery	2 × 12 V × 220 Ah

### 2) MAIN PUMP

Item	Specification	
	Loader	Steering
Type	Load sensing hydraulic system	
Pump	Variable displacement piston pump	
System pressure	280 kgf/cm <sup>2</sup> (4061 psi)	210 kgf/cm <sup>2</sup> (3046 psi)
Rated oil quantity	237 ℓ /min (62.6 U.S.gpm)	159 ℓ /min (42 U.S.gpm)



### 3) FAN + BRAKE PUMP

Item	Specification
Type	Variable piston pump
Capacity	28 cc/rev
Maximum operating pressure	250 kgf/cm <sup>2</sup> (3560 psi)
Rated oil quantity (at 2200rpm)	62 ℓ /min (16.3 U.S.gpm)
Maximum speed	2100 rpm

### 4) MAIN CONTROL VALVE

Item	Specification
Type	2 spool / 3 spool
Operating method	Hydraulic pilot assist
Main relief valve pressure	280 kgf/cm <sup>2</sup> (3980 psi)
Overload relief valve pressure	340 kgf/cm <sup>2</sup> (4840 psi)

### 5) REMOTE CONTROL VALVE (EH TYPE)

Item	Specification
Type	Fingertip
Axle	Single axle for boom, bucket, auxiliary
Operating voltage	4.5~5.5 V
Output signal	0.5~4.5 V (neutral 2.5 V)

### 6) REMOTE CONTROL VALVE (FNR TYPE)

Item	Specification
Type	Joystick
Axle	Two axle for boom, bucket, roller for auxiliary
Operating type	CAN J1939
Baud rate	500 kbps

## 7) CYLINDER

Item		Specification
Boom cylinder	Bore dia × Rod dia × Stroke	Ø 170 × Ø 100 × 795 mm
Bucket cylinder (HL975 T3)	Bore dia × Rod dia × Stroke	Ø 190 × Ø 100 × 565 mm
Bucket cylinder (HL975XT T3)	Bore dia × Rod dia × Stroke	Ø 190 × Ø 100 × 585 mm
Steering cylinder	Bore dia × Rod dia × Stroke	Ø 100 × Ø 55 × 467 mm

## 8) DYNAMIC POWER TRANSMISSION DEVICES

Item		Specification
Transmission	Model	ZF 4WG 260
	Type	Converter
		Single-stage, single-phase
	Transmission	
	Full-automatic power shift	
	Gear shift	
	Forward fourth gear, reverse third gear	
Transmission	Control	
	Electrical single lever type, kick-down system	
	Automatic kick down from 2nd to 1st gear	
	FNR switch on joystick lever (option)	
	Pump rated flow	
	115 ℓ /min (30.4 U.S.gpm) at 2000 rpm	
	Travel speed	
Axle	See the page 2-2.	
	Drive devices	
	4-wheel drive	
Axle	Front	
	Front fixed location	
Axle	Rear	
	Oscillation ± 12° of center pin-loaded	
Wheels	Tires	
Brakes	26.5 R25 L3, ★★	
	Travel	
Brakes	Four-wheel, wet-disc type, full hydraulic	
	Parking	
Steering	Spring applied, hydraulic released brake on T/M	
	Type	
Steering	Full hydraulic, articulated	
	Steering angle	
Steering	40° to both right and left angle, respectively	